

CRANE-National Vendors

60 Lb. White

DOCUMENT: 6234333

Pagination Guide

2 Staples

**AVOID MAKING MARKS ON THIS PAGINATION GUIDE.
PLEASE RETURN THIS GUIDE WITH ARTWORK!**

FRONT SIDES	BACK SIDES
Self Cover (page 1)	2
3	4
5	6
7	8
9	10
11	12
13	14

KIT PART NUMBER 6234332

INSTRUCTIONS FOR RETIMING THE BREWER ASSEMBLY

CHECK THE PARTS RECEIVED IN THE KIT WITH THE PARTS LIST IN THESE INSTRUCTIONS. IF ANY PARTS ARE MISSING, CONTACT NATIONAL VENDORS PARTS DEPARTMENT.

Read these instructions carefully before installing the kit.
Keep these instructions for part numbers and for future reference.

This kit contains the following:

INDEX	PART NUMBER	DESCRIPTION	QTY
1	6234329	Brewer Assembly Bracket	1
2	9900167	Screw	1
3	9900031	Wingnut	1

Brewer Disassembly Procedure

1. Remove the cup station (figure 1).
2. Disconnect the two hoses from the brew barrel manifold and one from the coffee funnel. [Identify the hoses to aid in the reassembly] (figure 1).
3. Take the brewer assembly out of the merchandiser (figure 1).
4. Remove the brew barrel from the brew barrel support (figure 2).
5. Remove two ¼ - 20 screws, springs, and ¼ - 20 nuts from the brew barrel support. Lift off the support plate (figure 2).
6. Lay the brewer on the side opposite the brewer driver connector (figure 3).
7. Remove the two springs from the front tabs on the bottom front wall assembly (figure 4).
8. Drive out the swingarm shaft and remove the swingarm (figure 4). [May require a hammer and punch.]
9. The brewer drive connector can now be taken off by removing the retaining ring holding it in place. Note that the driver connector and the shaft can only be assembled one way (figure 3).
10. Loosen and remove the six screws which secure the brewer sidewall nearest you (figure 3). **NOTE** Only two screws are shown in the drawing, but all 6 screw holes are indicated.
11. Remove the two screws in the sidewall spring cover (figure 3). Pop the cover off.
12. Lift and set aside the brewer sidewall (figure 3).
13. Lift and set aside the rack gear assembly (figure 5, index # 8).
14. Lift and set aside the pinion gear assembly (figure 5, index # 5).
15. Lift and set aside the stop shaft (figure 5, index #10). [Be careful not to loose the two stop shaft rollers.]
16. Lift and set aside the gear and cam assembly (figure 5, index # 22).
17. Remove and set aside the hex spacer (figure 6).
18. There should be no need to remove the Rear Wall, Bottom Front Wall, or Papermech Assembly (if so equipped).
19. Proceed to the ***Brewer Timing Procedures***.

Brewer Timing Procedures.

1. Install the gear and cam assembly into the front sidewall of the brewer. The flat lip of the drive gear should be next to the end of the curved extrusion over the gear assembly (figure 7). [Refer to the area inside the square]
2. Attach the brewer assembly bracket (6234329) to the inside of the sidewall by inserting the screw (9900167) through the swingarm assembly mounting hole and through the brewer assembly bracket (figure 7). Secure with a wingnut (9900031).
3. Remove the brew basket from the basket housing (figure 5, index # 7).
4. Lay the rack assembly on a flat surface with the rack gear teeth facing up and the basket housing on the left.
5. Before proceeding any further you need to check a few things (figure 8). First, make sure both pinion gears are aligned with each other. The notch on each gear should be in the same position. Also, note the long tooth at the left end of each rack gear. The notch on each pinion gear must mate with the long tooth of the rack gear.
6. Having checked the above, place the pinion gear assembly on the left side of the rack gear assembly (figure 8). The pinion gear and the rack gear each have a timing mark on one tooth. Roll the pinion gear to the right four teeth. Check the top pinion and rack gear to make sure the timing marks are lined up.
7. The brewer timing has now been correctly set. However, it is essential that the position of these gears be maintained as you proceed to the ***Brewer Reassembling Procedures.***

Brewer Reassembly Procedures.

1. With your right hand grasping the left side of the rack gear, place your thumb on the pinion gear shaft and apply pressure towards the rack gear assembly.
2. Guide the pinion gear shaft and the basket housing into the brewer assembly bracket (figure 7). Lower the assembly until the rollers on the basket housing and the rack gear assembly seat in their respective guide slots in the brewer sidewall. Make sure the pinion gear shaft is inserted into the pinion gear boss.
3. Carefully rotate the brewer upside down so that the rack gear is closest to you.
4. Install the hex spacer and secure with one screw (figure 6).
5. Carefully rotate the brewer back on its front sidewall with the rack gear to your right.
6. Make sure both stop shaft rollers are on the stop shaft and insert the shaft into the sidewall (figure 5, index # 10).
7. Place the sidewall on the brewer while aligning the pinion gear shaft, gear and cam assembly shaft, stop shaft and rollers, and the paper mechanism assembly with their respective holes and slots in the sidewall. If you experience any difficulty lining up these parts, check the roller on the basket housing. (Figure 9, index # 1 should be inside the brewer basket housing bearing slot as illustrated in figure 7) These rollers will sometimes not align with their mating slot and will require a slight assistance.
8. Remove the brewer assembly bracket (figure 7).
9. Attach the drive connector to the gear and cam assembly shaft. Rotate the shaft to ensure the rack assembly and drive gears are correctly timed. Secure in place with the retaining ring (figure 3).
10. Secure the sidewall by installing six mounting screws.
11. Reassemble the sidewall spring cover with two mounting screws (figure 3).
12. With the spring side facing down, put the swingarm assembly in the front of the brewer. Insert the swingarm shaft through the brewer sidewall, through the swingarm assembly retaining flanges, and into the opposite sidewall. It may be necessary to lightly tap on the end of the swingarm shaft in order to push it through (figure 4).
13. Hook the ends of the springs hanging under the swingarm to the tabs on the front of the brewer assembly. Use the whipper impeller extractor to help you.
14. Place the brewer on its bottom with the drive connector on your right (figure 4).
15. Attach the brew barrel support with the short flange on your right to the brewer assembly, and secure with two $\frac{1}{4}$ - 20 screws, springs, and $\frac{1}{4}$ - 20 nuts removed in step 5 of the dismantlement procedure. Adjust the clearance between the top of the $\frac{1}{4}$ - 20 nut and the top of the slot to $\frac{5}{8}$ of an inch (figure 10).
16. The brewer assembly is now timed and reassembled and ready to be reconnected to the Hot Drink Center (figure 1).

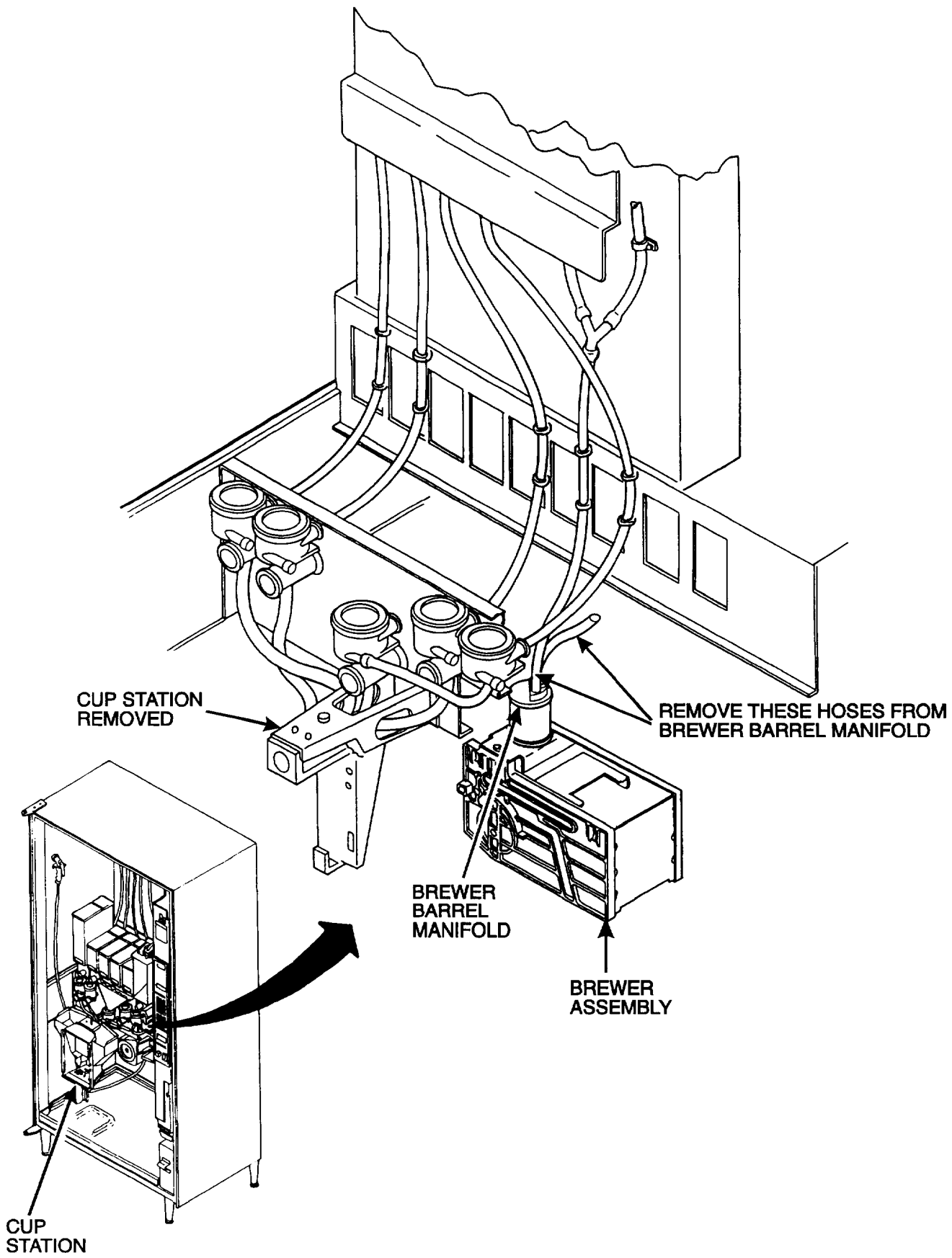


FIGURE 1

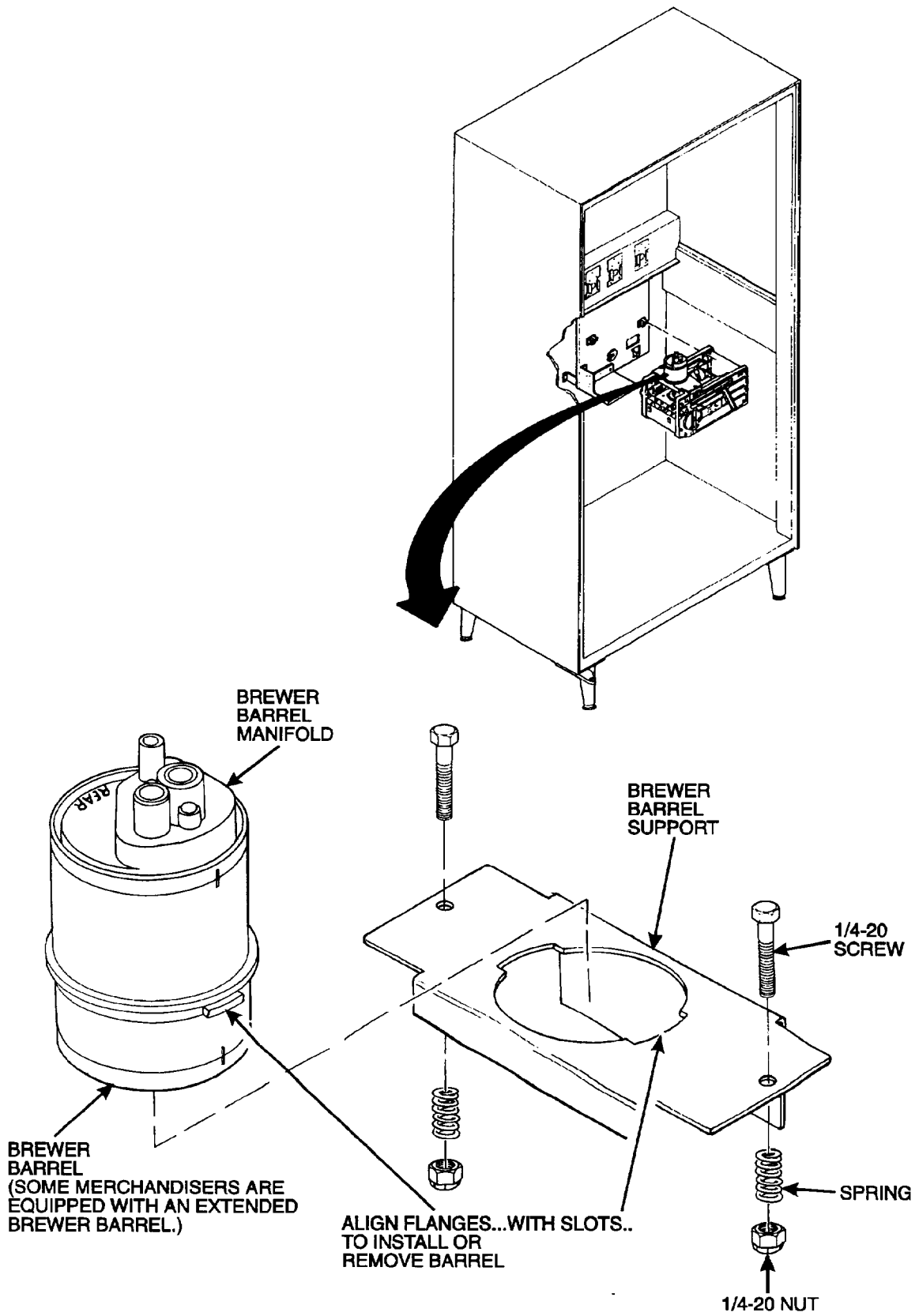
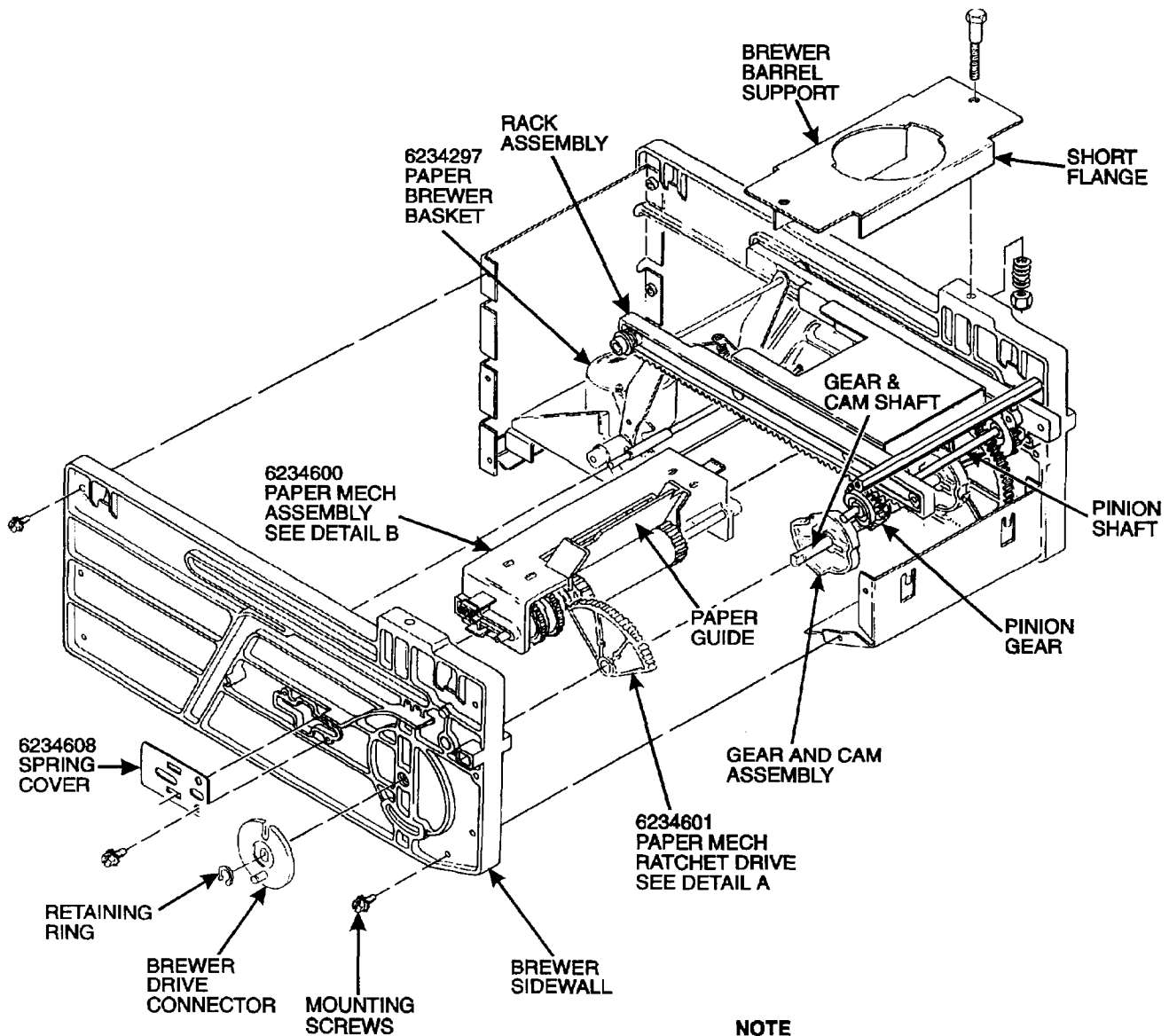


FIGURE 2



NOTE
BREWER SHOWN IN THE FLIP POSITION.

FIGURE 3

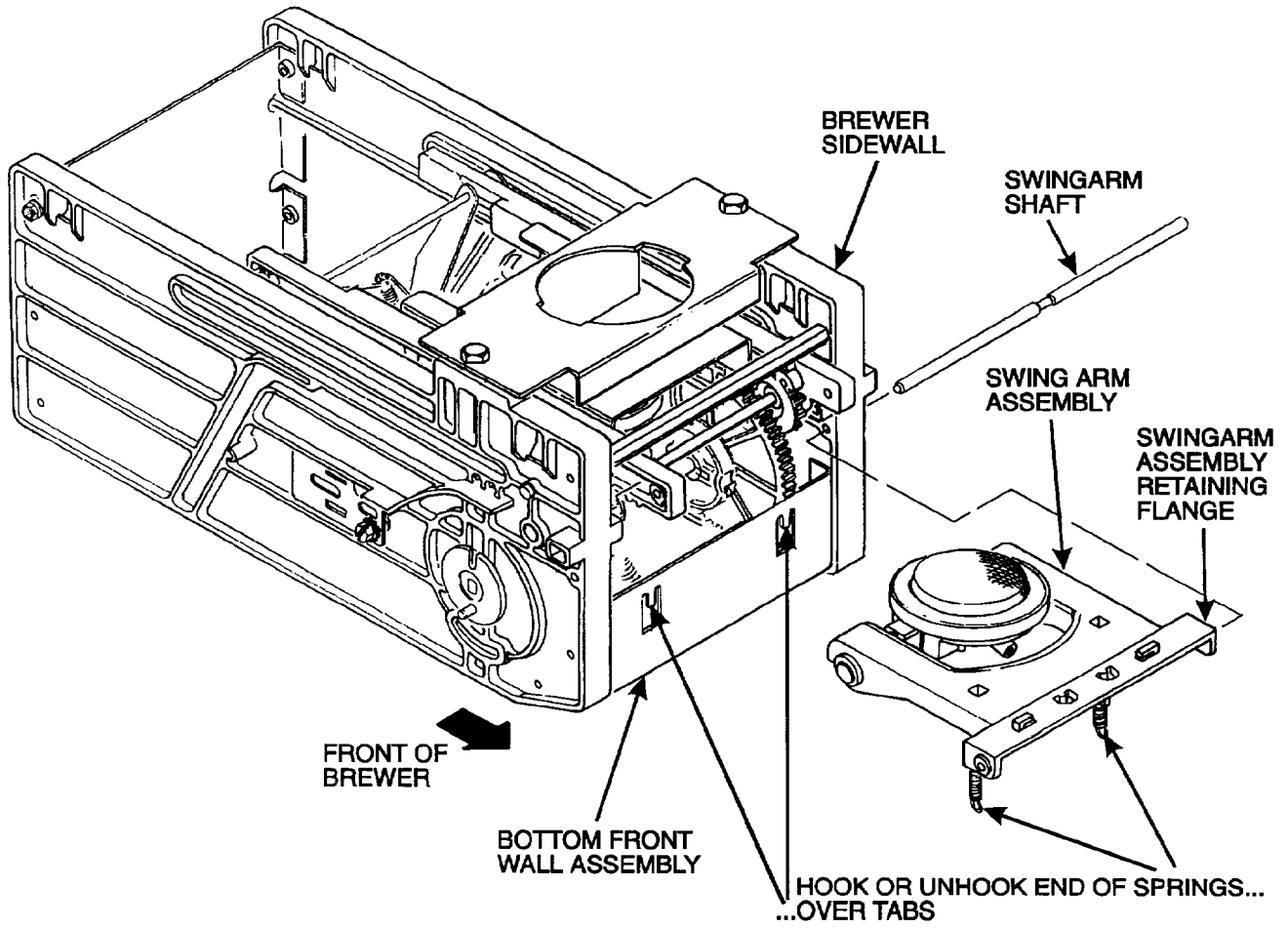


FIGURE 4

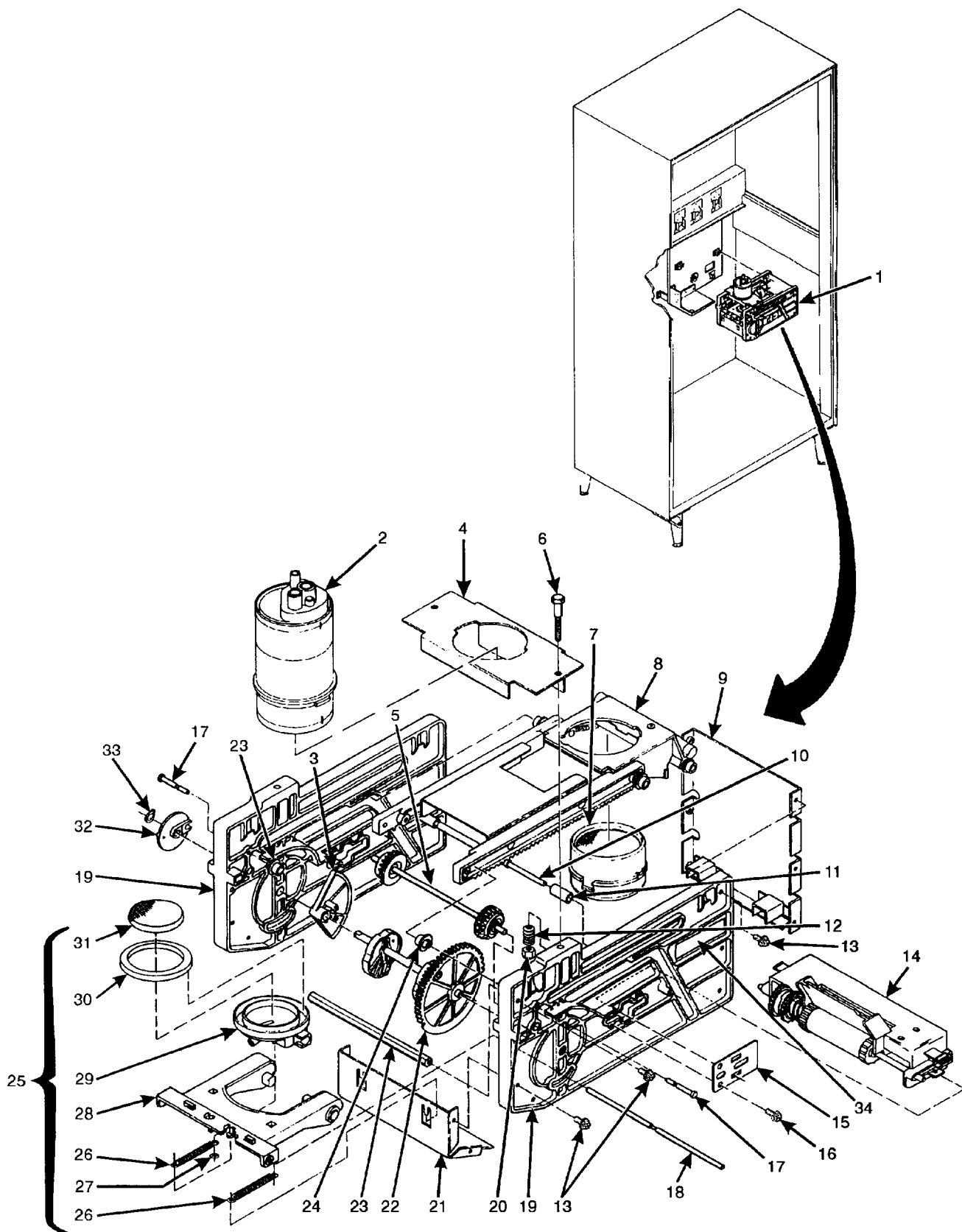
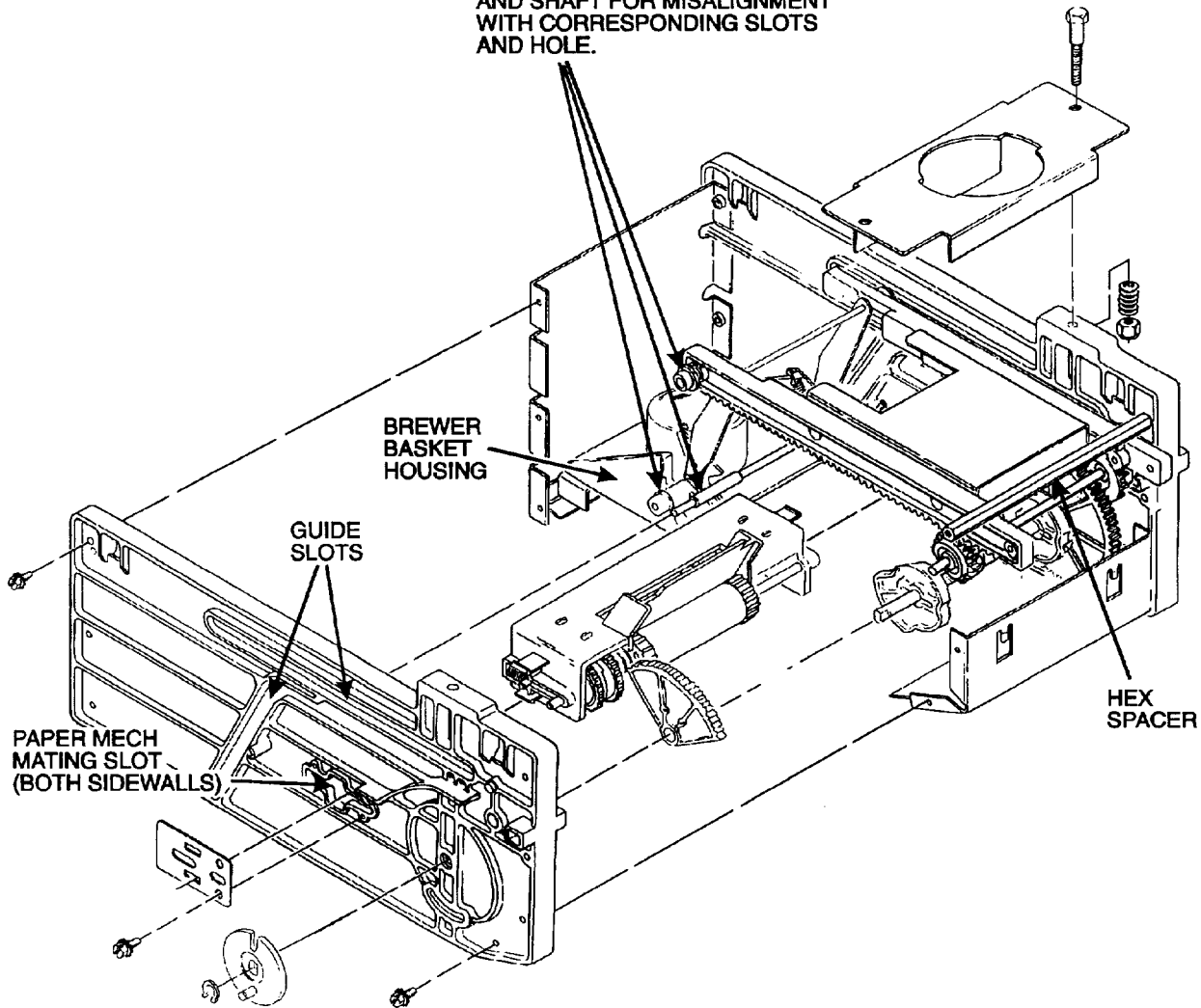


FIGURE 5

IF THE SIDEWALL DOES NOT SEAT
READILY DURING ASSEMBLY,
CHECK THESE ROLLER BEARINGS
AND SHAFT FOR MISALIGNMENT
WITH CORRESPONDING SLOTS
AND HOLE.



NOTE
BREWER SHOWN IN THE
FLIP POSITION.

FIGURE 6

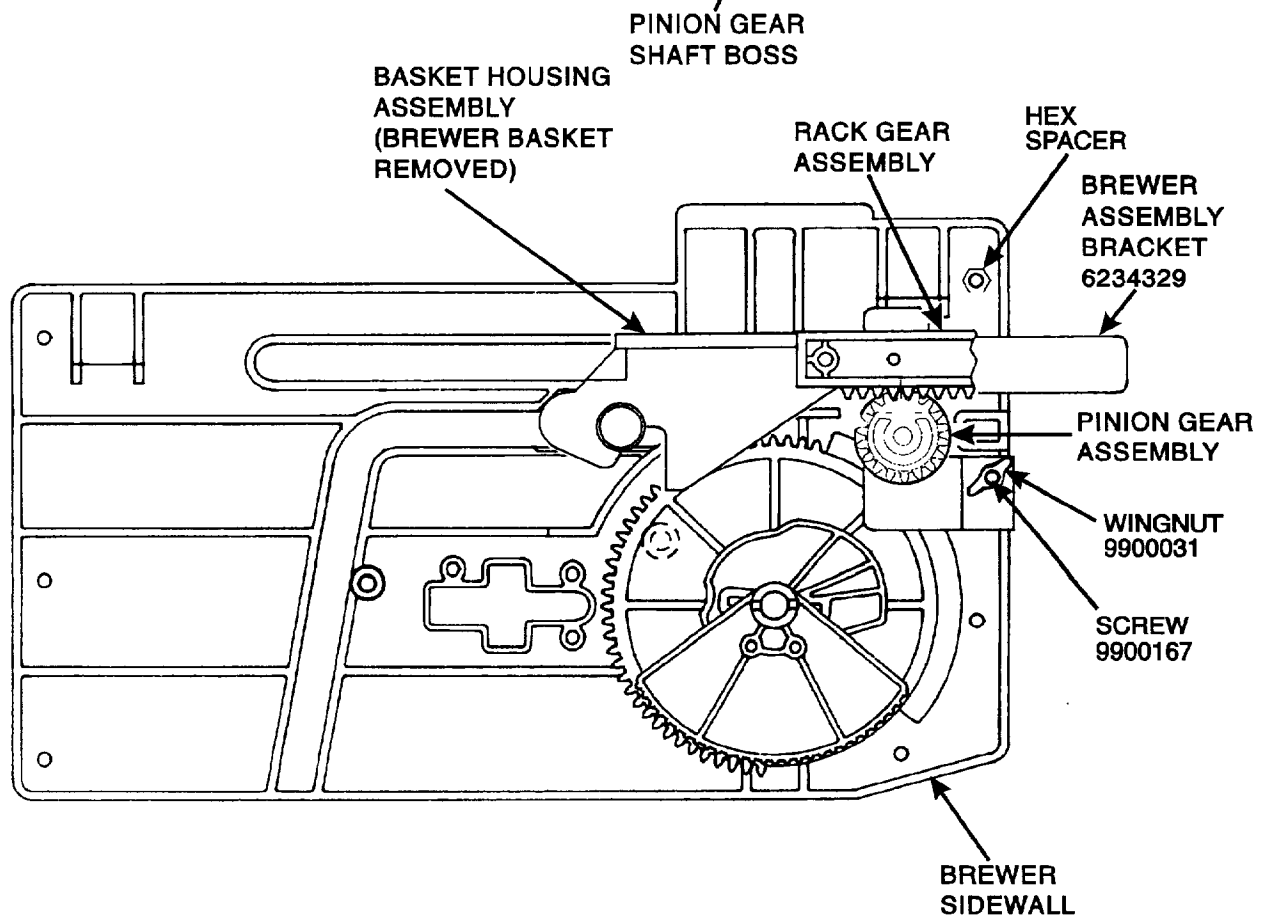
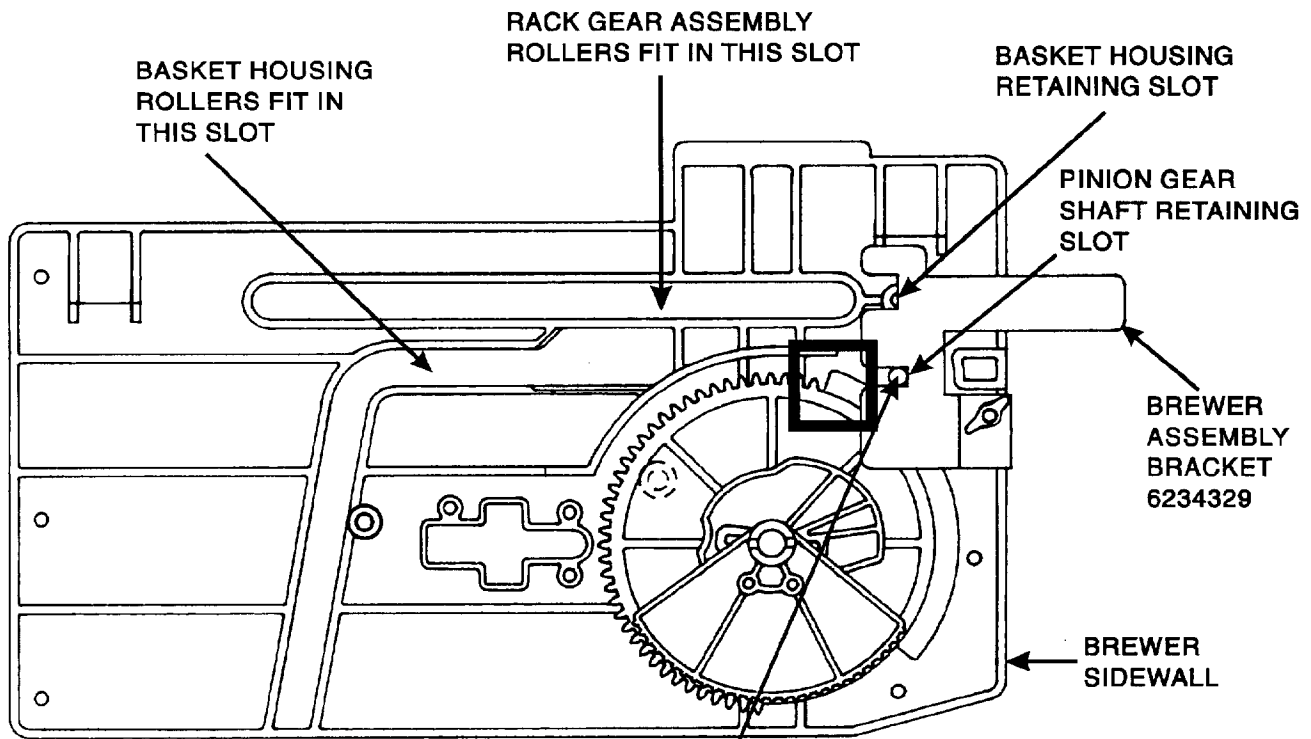


FIGURE 7

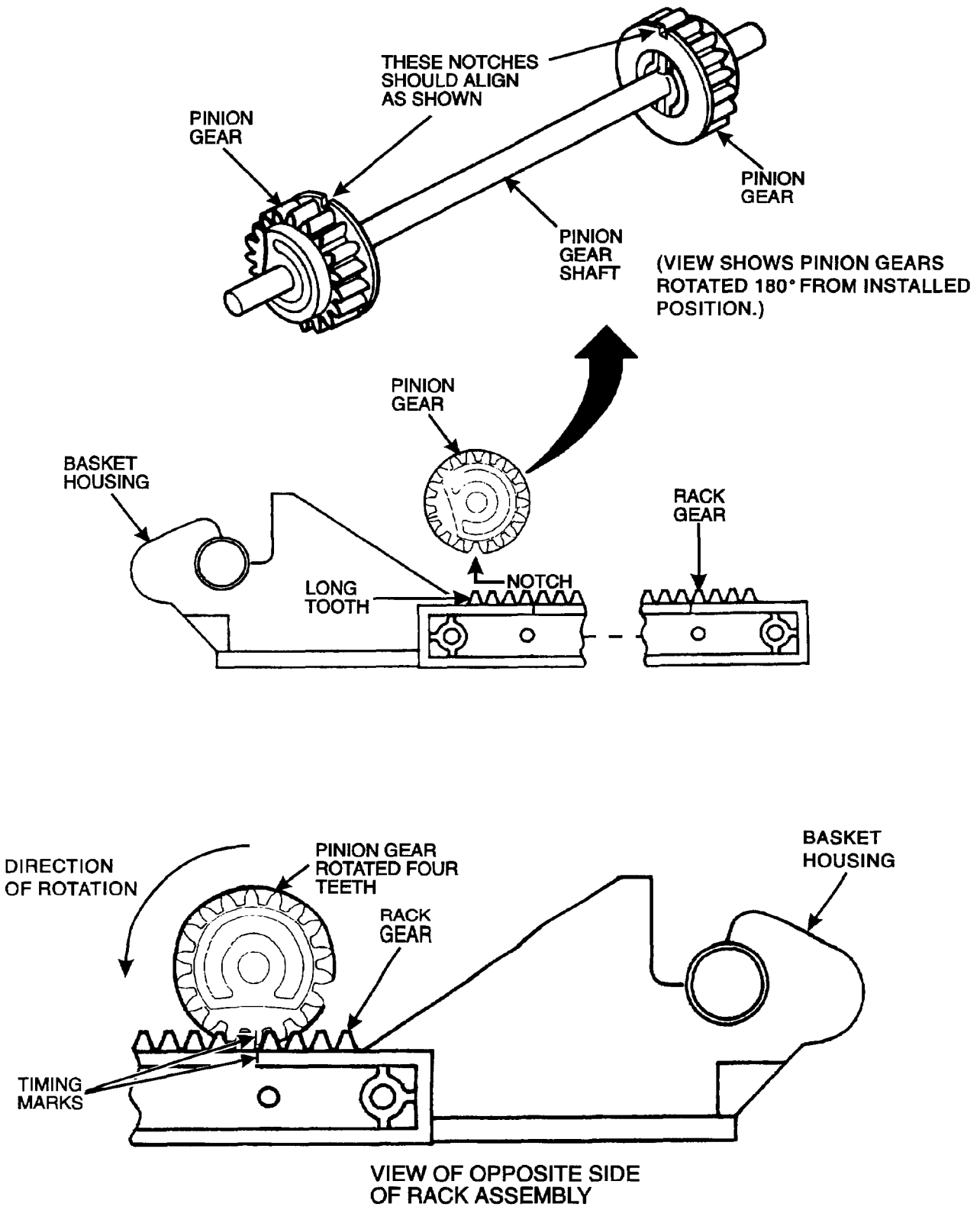


FIGURE 8

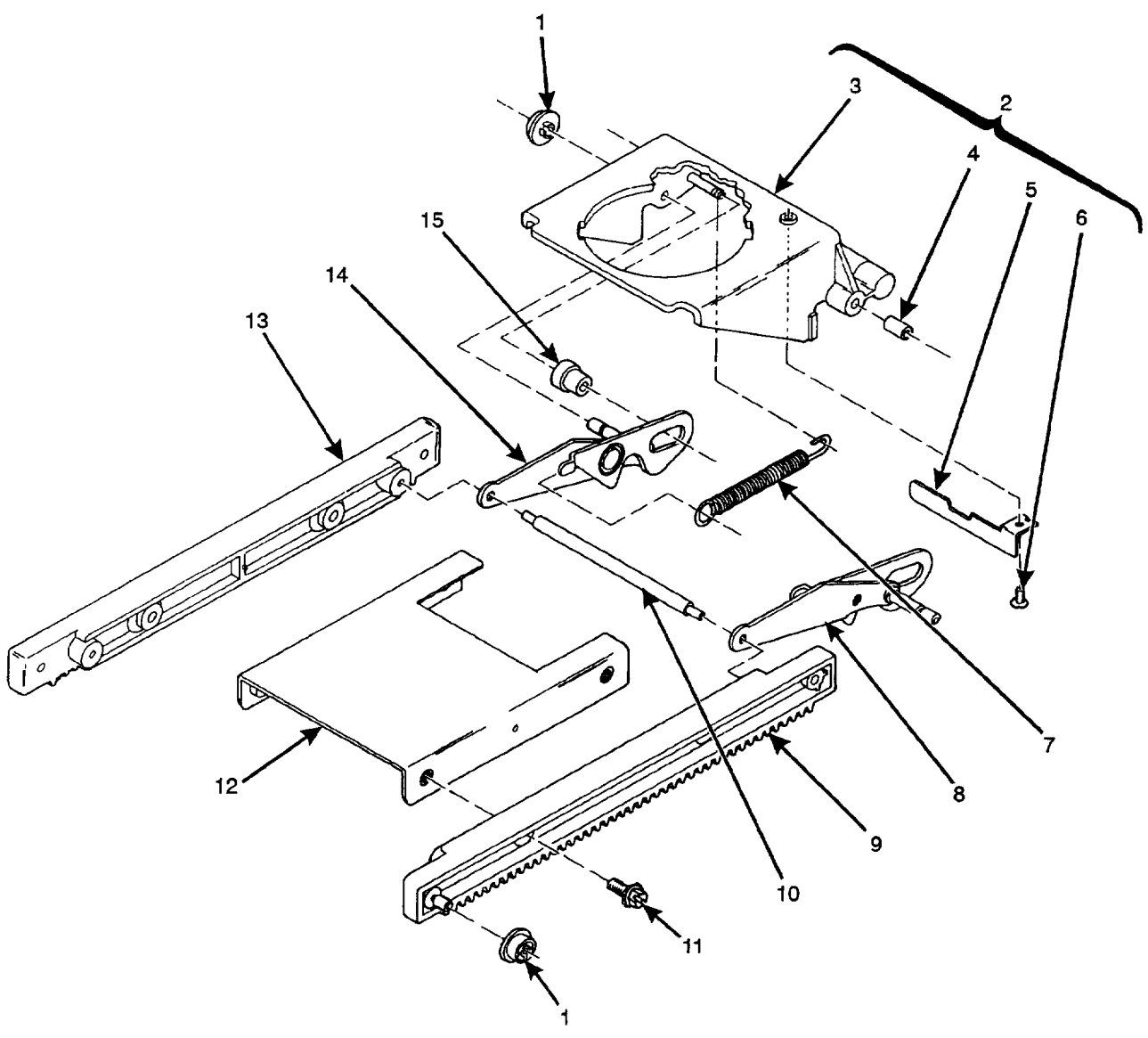


FIGURE 9

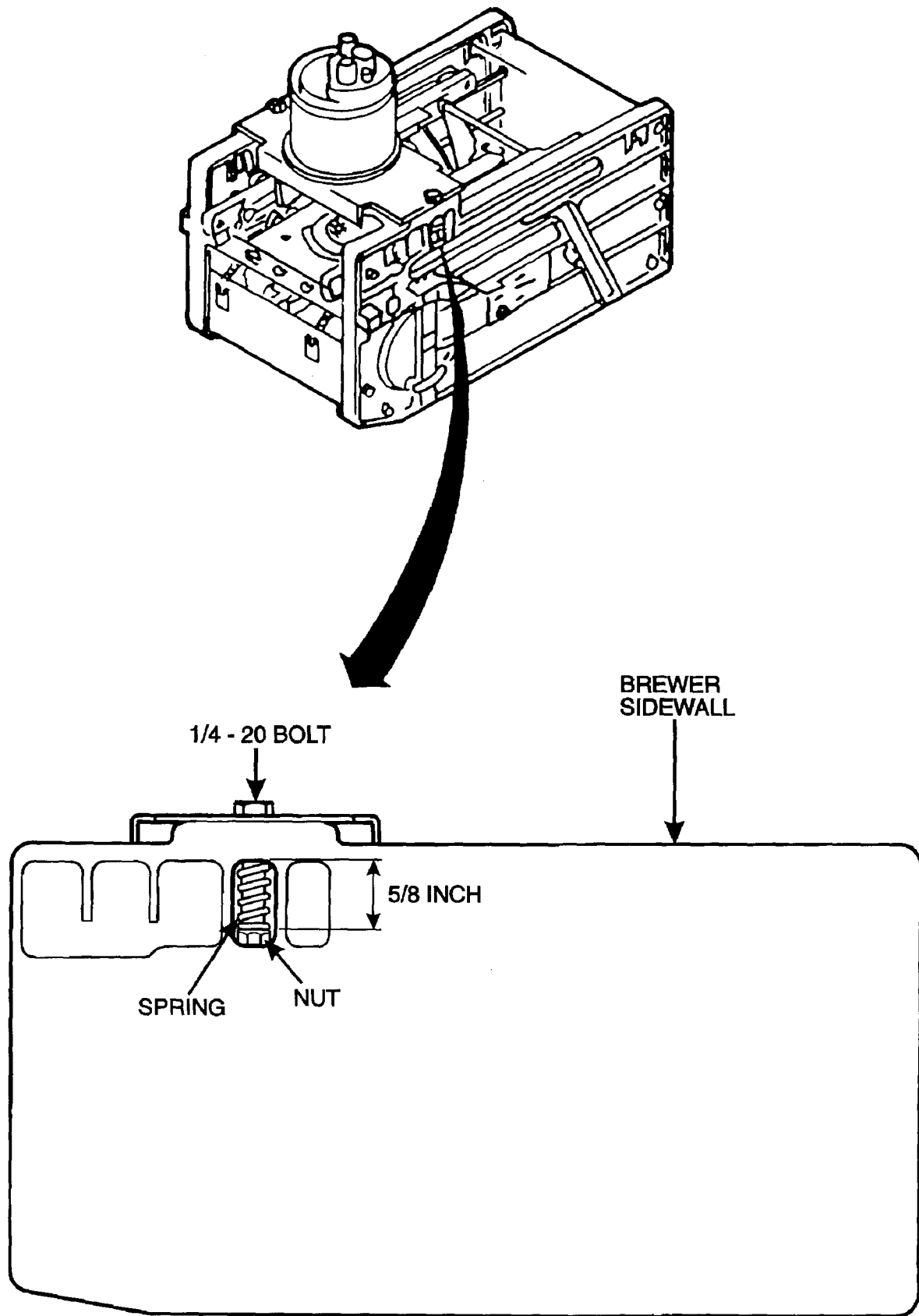


FIGURE 10